



HAUSNER HARD CHROME
I N C O R P O R A T E D



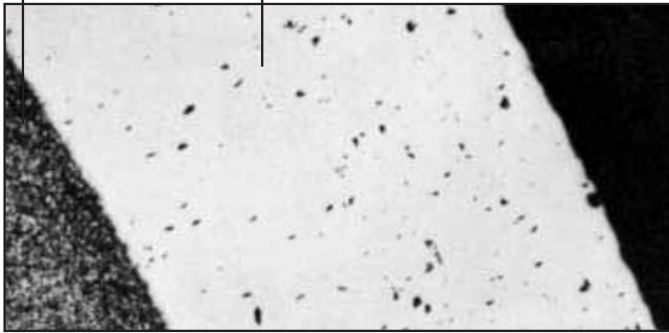
DEVELOPERS OF H.H.CHROMESEAL®

WHAT IS HAUSNER HARD-CHROME'S H.H.CHROMESEAL®?

H.H. Chromeseal® is HHC's special Hard Chrome process that is enhanced with various impregnated materials within its microstructure. Impregnating with a combination of dry lubricants, release agents, and hard or heat resistant materials.

CARBON STEEL BASE

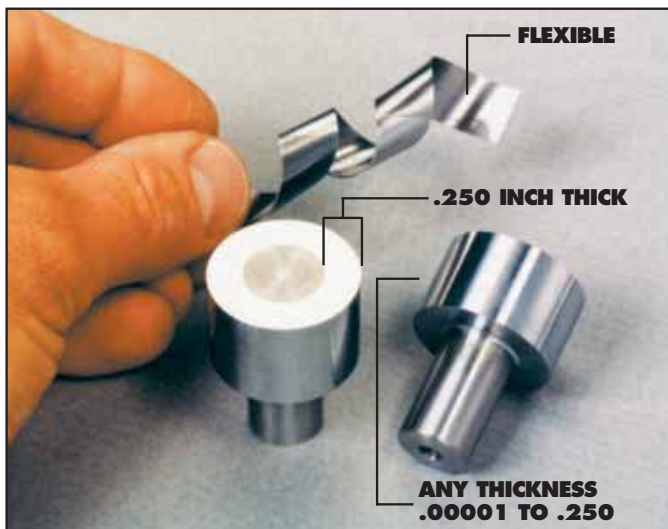
**.010 THK H.H.CHROMESEAL®
HARDNESS 70RC SHOWING
DRY LUBRICANTS**



H.H.CHROMESEAL 65X MAGNIFICATION

HDVF CHROME

Developed for use by the microchip manufacturers with applications in the food and drug industries. This High Density Void Free chrome allows stainless steel mating parts to run without lubrication in any atmosphere including a vacuum. The chrome on chrome application has use whenever lubrication and/or contamination is of concern. HDVF chrome can eliminate normal galling and scoring while reducing friction!



FLEXIBLE

.250 INCH THICK

**ANY THICKNESS
.00001 TO .250**

WHAT ARE ITS BENEFITS

HHC can rebuild your used parts or process new ones, eliminating or greatly reducing friction, wear, galling, sticking, corrosion, chemical attack, or heat damage. **OUT PERFORMS O.E.M. PARTS.** The H.H.Chromeseal® process has provided a significant cost reduction for virtually every industry in the world.



EXTRUSION SCREW

A photograph of Wolfgang J. Hausner, Founder & C.E.O., standing in a factory. He is wearing a white short-sleeved shirt, a patterned tie, and grey trousers. He is holding a cylindrical metal part. In the background, there are large rolls of metal and a sign that says "CINCINNATI".

Wolfgang J. Hausner
Founder & C.E.O.

HISTORY OF HAUSNER HARD-CHROME, INC.



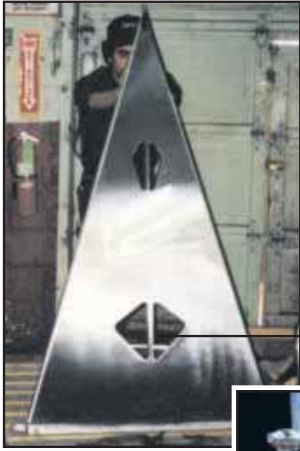
Jeffrey G. Hausner
President



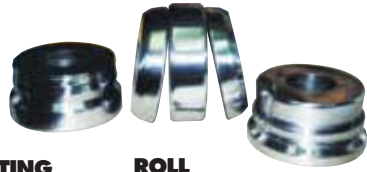
David J. Hausner
Vice-President Operations

Hausner Hard-Chrome has its roots in Germany, where Hans Hausner developed and operated one of the largest Hard Chrome Plating plants from the 30's to the end of World War II. After the war, he immigrated to the United States with his family, where he and his son Wolfgang started in the business again with a small plant in Chicago. Upon Hans' retirement and the closure of the plant, Wolfgang founded Hausner Hard-Chrome in Elk Grove Village in the late 60's. That plant has since grown into one of the largest hard chrome facilities in the United States, with two plants employing over 100 people.

Wolfgang's two sons, David and Jeff, are the third generation to be involved in the plating business as they participate in the running of the company. Along with Wolf, this management team has a goal of keeping the company as the industry leader with regards to Quality, Service and Innovation (QSI).



INDUSTRY WIDE APPLICATIONS



PRINTING FORMER BOARD

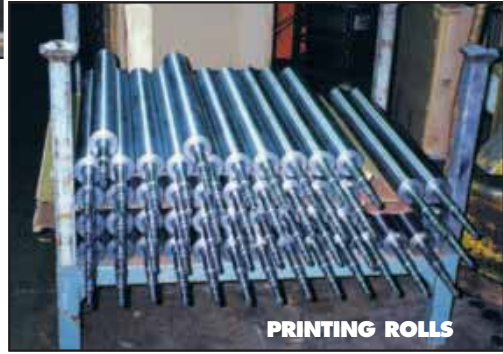
ROLL FORMING DIES



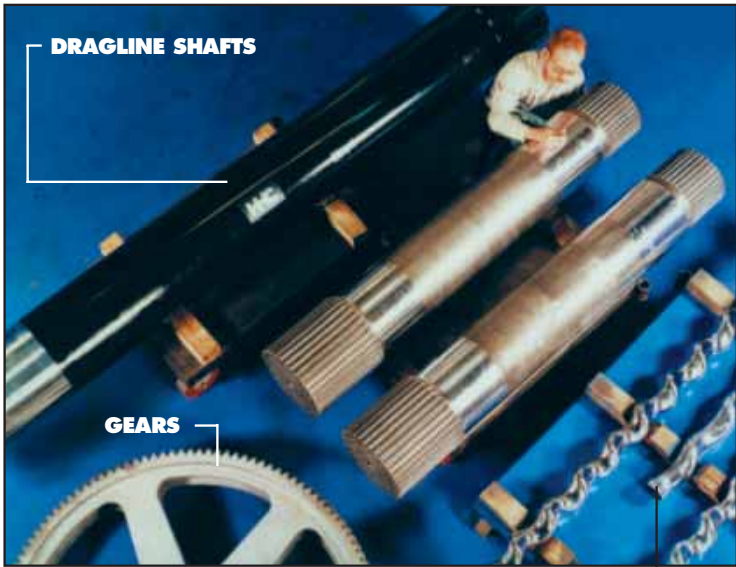
SCREENS



TOOL & DIE PARTS



PRINTING ROLLS



DRAGLINE SHAFTS

GEARS

PUMP ROTORS



LARGE PRESS PLATE



SHAFT

MILL ROLL

QUALITY ASSURANCE

All parts receive 100% inspection throughout operation in our modern, well equipped quality controlled facilities. We have a large staff of experienced Quality Assurance personnel using the latest inspection equipment and technology. HHC will work within customer guidelines or specifications to meet and exceed their needs. HHC has experience processing parts to a variety of specifications including QQC-320B, ASTM B 650-85, DuPont 4447 and M2M, ABS and various others.



A new foundry part goes through final inspection to assure thickness requirements, providing wear protection as well as cost savings for customers.



In-coming, in-process & final inspection is critical to reproduce consistent quality, tight tolerances and customer requirements.



**90,000 LB.
MOTOR ARMATURE**

The importance of inspection takes top priority from the smallest job to jobs such as expensive turbines and armatures being repaired using the H.H.Chromeseal® Process.



Emergency Breakdown job processed over the weekend. Part of the Quality Service and Innovation that is HHC's reputation.

COMPLETE MACHINE SHOP SERVICES

HHC machining capabilities operate 24 hours a day, 7 days a week. Including large capacity lathe work, cylindrical grinding, tool post grinding, dynamic balancing, milling and much more.



GRINDING PINION SHAFT



REPAIRING DRUM DRYER ROLL



SURFACE FINISHING LARGE RAM



TURNING GEAR JOURNAL

PARTS FABRICATION

HHC also fabricates parts to your specifications as shown below.



DYNAMIC BALANCING



I.D. GRINDING



ROTATIONAL WELDING OF ROLL HEAD PLATE

MATERIALS PLATED

Plating on all metals, ferrous and non-ferrous including aluminum, all cast metals as well as all carbides.



BREAKFAST CEREAL DIE



ALUMINUM BRAKE PAD MOLD



BRONZE PUMP SLEEVES



SCREW MACHINE SHAFT



TOOL STEEL EXTRUSION DIES



ON-SITE REPAIR OF GENERATOR SHAFT

ON-SITE PLATING

Advantages:

- Greatly reduces production down time
- Saves on costly equipment tear down
- Stops leaks
- Improves safety
- Reduces environmental concerns
- Less complications
- Saves you valuable labor
- No headaches with removal and replacement of equipment
- We process with all kinds of metals of different properties and hardnesses
- No materials left on your location
- No stress, no heat, durable repair and protection
- Emergency (breakdown) service 24 hours a day
- We work with your schedule

PARTS WE CAN REPAIR

- | | |
|----------------|---------------------|
| Journals | Seal fits |
| Shafts | Rolls |
| Bores | Axles |
| Bearing Shells | Electrical contacts |
| Molds | Dies |

CORRECTABLE PART PROBLEMS

- | | |
|----------------------|---------------|
| Damage | Mismachining |
| Corrosion resistance | Wear |
| Conductivity | Galling |
| Sticking | Modifications |



HHC DEMONSTRATION KIT

INDUSTRIES SERVICED

Aerospace
Aluminum and Steel Mills
Brass and Copper Mills
Coil Processing
Die Casting and Sand Casting
Fiber Board Stamping
Food Processing
Foundries
Grain Processing
Hydraulics

Laminate Processing
Machine Shops
Manufacturing
Medical Industries
Mining and Aggregate
Oil Refineries
Pipe Mills
Plastic and Rubber Industries
Power Plants
Printing

Pulp and Paper Mills
Repair and Rebuild Shops
Roll Forming
Roofing
Stamping
Steel Warehouses
Textile
Tool & Die Industries
Waste Water Treatment Plants

JUST TO NAME A FEW.

www.hausnerinc.com



HAUSNER HARD CHROME ILLINOIS

670 GREENLEAF AVE.
ELK GROVE VILLAGE, IL 60007-5084
PHONE: 847-439-6010
FAX: 847-439-6027
EMAIL: sales@hausnerinc.com



HAUSNER HARD CHROME KENTUCKY

3094 MEDLEY RD.
OWENSBORO, KY 42301-8731
PHONE: 270-684-2279
FAX: 270-684-4638
EMAIL: sales@hausnerinc.com



HAUSNER HARD CHROME CORPORATE HEADQUARTERS

3094 MEDLEY RD.
OWENSBORO, KY 42301-8731
PHONE: 270-684-2279
FAX: 270-686-7571
EMAIL: sales@hausnerinc.com

**FOR MORE INFORMATION VISIT OUR WEB SITE OR
CONTACT SALES AT ONE OF OUR LOCATIONS.**